

Inventory and Check-In Report

for

Sample, Your Road, London, S17 MBA



Instructed by

Your Name

Prepared By

Symba Residential

Date of Report

03/April/2017

Contents

About The Report	3
Tenant guidance notes	4
Property Information	5
General:	5
Utility Meters:	5
Keys:	6
Smoke Alarms & CO Detectors:	6
Safety:	7
Cleaning Condition:	7
1: Hallway	8
2: Lounge	11
3: Kitchen	15
4: Cupboard	23
5: Bedroom 1	26
6: En Suite	29
7: Bedroom 2	34
8: Bedroom 3	38
9: Bathroom	42
10: Balcony	47
Declarations	48
Tenant Declaration	48
Assessor Declarations	48

About The Report

This report:

This report provides an impartial and easy to follow schedule of condition for each of the main features of the property on a room by room basis, together with details of its contents if present. It has been prepared on the understanding that where no comment on the condition of an element or item is made by the inventory assessor, the element or item is taken to be in good serviceable condition and without defect(s). This report will specifically comment on, and identify defects or elements in poor condition that have been observed during the inspection and will be described in the narrative of the report/ evidenced in the photographs contained in the report.

Where the words 'silver', 'chrome', 'oak', 'pine', etc. are used, it is understood that this is a description of the colour and type of the item and not the actual fabric. The description of the listed items is for identification purposes only. New items will only be described as such when they are in a new building, still in their wrappings, or with a receipt.

Where an inventory report is compiled at an old property, it must be understood that the condition of the fabric and contents are normally age worn and age marked unless otherwise noted.

What this report does not tell you:

The person preparing this report is not an expert on fabrics, woods, materials, antiques etc: nor a qualified surveyor or Valuer. This report will not necessarily mention structural defects and does not give any advice on the cost of any repair work, or the types of repair which should be used. Fixtures and fittings are listed and described; they are not tested and no comment is made as to the working condition.

What is inspected?

The inventory assessor carries out a visual inspection of the inside of the main building together with any contents and will carry out a general inspection of the remainder of the building. Inaccessible areas, garages, outbuildings and loft areas will not be inspected. Belongings left by the landlord in a locked room or outbuildings will not be included and are the sole responsibility of the landlord. Items of little monetary value are listed and described generically; i.e. a bookshelf could be described as containing 'a number of paperback books'. Similar items will include used bedding, used kitchen utensils, tableware etc.

Ownership:

This report remains the property of the instructing party and shall not be used or copied without their written permission.

IMPORTANT: This report must be signed by the tenant(s) and returned to the issuing agent within 5 working days from the commencement of the tenancy. If the report is not returned by the tenant(s) within this timescale, any future discrepancies will not be admissible.

Tenant guidance notes

It is expected that the property and its contents will be in a similar condition of cleanliness as noted in the original inventory. If the standard of cleaning is not satisfactory, most managing agents or Landlords will employ a contract cleaner - the cost of which will be deducted from the tenant's deposit. Where professional cleaners are used, receipts should be retained and produced if required.

All cleaning must be thorough and the property left tidy at the end of the tenancy. The main areas for concern are set out below:

Carpets should be professionally cleaned before the end of a tenancy in accordance with the inventory or tenancy agreement and vinyl/tiled flooring should be left clean and free from cracks or tears.

Curtains should be professionally cleaned before the end of a tenancy in accordance with the inventory or tenancy agreement.

The decor throughout the property should be in the same state and condition as at the start of the tenancy as detailed within the original inventory. Charges may be incurred if picture hooks, nails, screws or screw holes etc have been added and not removed and the area made good. Charges may also be incurred where excessive wear is noted. Remove finger prints and excessive marks from the decor. Whilst reasonable wear and tear is expected, your fingerprints to walls and doors will be considered a cleaning issue.

Refrigerators/Freezers should be defrosted and left switched off and open to avoid smelling.

Ovens, Hobs, Extractor Hoods, and Microwaves should be cleaned of burnt on deposits and grease and doors/seals cleaned.

Tumble Dryers, Washing Machines and Dishwashers should have filters emptied, soap drawers cleaned of deposits and doors/seals cleaned.

Gardens where applicable should be left in a neat and tidy order, the lawns having been cut, borders and planters weeded, hedges trimmed and pathways/patios weeded and swept.

It is the Tenant's responsibility to keep the smoke and Carbon Monoxide alarms in working order during the life of the tenancy. Any faults (other than battery replacement) should be reported immediately.

Property Information

General:

Property Furnished	Unfurnished
Property Type	Flat
Property Style	Purpose Built
Stopcock location	Unknown
Security Alarm	No

Utility Meters:

	Location	Serial Number	Reading	Meter type	Date recorded
1: Electric	Boiler	*****	1546 kWh	Tariff	03/04/2017
2: Water	Communal Cupboard	*****	00002,596	Tariff	03/04/2017
3: Electric	Communal Cupboard	*****	00187	Tariff	03/04/2017

1: Electric



2: Water



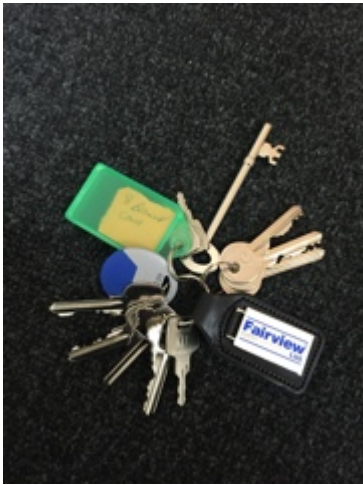
3: Electric



Keys:

	Location	Number	Comments
1: Security	Building Entrance, Flat Entrance, Communal Cupboard, Balcony Door, Window Keys, Letter Box	11	1 x FOB

1: Security Key



Smoke Alarms & CO Detectors:

	Location	Tested	Comment
1: Smoke Alarm	Hallway	No	
2: Smoke Alarm	Kitchen	No	

1: Smoke Alarm



2: Smoke Alarm



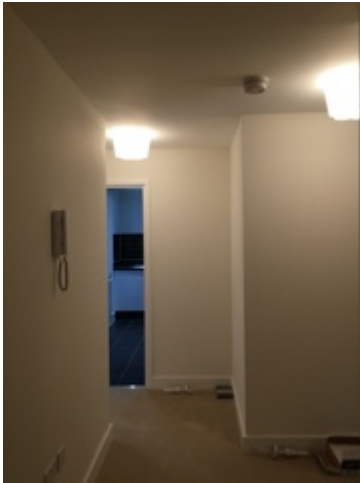
Safety:

Gas Safety Certificate	No
PAT Certificate	No
Window Locks/ Keys	Yes

Cleaning Condition:

General cleanliness	Cleaned to a professional standard/Brand new
Bathroom	Cleaned to a professional standard/Brand new
Bathroom Fittings	Visibly clean/May require light cleaning
Curtains and Blinds	Cleaned to a professional standard/Brand new
Carpets	Cleaned to a professional standard/Brand new
Hard flooring	Visibly clean/May require light cleaning
Kitchen	Cleaned to a professional standard/Brand new
Hob and Oven	Cleaned to a domestic standard/Generally clean except where noted
Kitchen white goods	Cleaned to a professional standard/Brand new
Mattress(s)	None Reported
Upholstery	None Reported
Windows (Inside)	Cleaned to a professional standard/Brand new
Windows (Outside)	Cleaned to a domestic standard/Generally clean except where noted
Woodwork	None Reported

1: Hallway



1.1 Ceiling

	Element	Element Description	Observations (Check-In)
1.1.1	Ceiling	Plaster Finish, Painted, White	

1.2 Lighting

	Element	Element Description	Observations (Check-In)
1.2.1	Pendant	2 x, With Bulb, With Plastic Shade	



1.2 Lighting

1.3 Door

	Element	Element Description	Observations (Check-In)
1.3.1	Door Frame	Wood, Painted	
1.3.2	Front Door	With Chrome Effect Lever Handle(s), With Numerals, With Security Chain, With Self Closer, With Spy Hole, With Yale Lock, Wood	Door has a few marks.



1.3 Door



1.3.2 Door has a few marks.



1.3.2 Door has a few marks.

1.4 Floor

	Element	Element Description	Observations (Check-In)
1.4.1	Carpet	Close Woven Pile, Fitted, Cream	

1.5 Wall

	Element	Element Description	Observations (Check-In)
1.5.1	Skirting	Painted, White	Skirting has a few marks.
1.5.2	Wall	Plaster, Painted, Cream	Walls have a light mark and chips.



1.5.1 Skirting has a few marks.



1.5.1 Skirting has a few marks.



1.5.1 Skirting has a few marks.



1.5.2 Walls have a light mark and chips.



1.5.2 Walls have a light mark and chips.



1.5.2 Walls have a light mark and chips.

1.6 Security

	Element	Element Description	Observations (Check-In)
1.6.1	Entry Phone	With Handset, White	



1.6 Security

2: Lounge



2.1 Ceiling

	Element	Element Description	Observations (Check-In)
2.1.1	Ceiling	Plaster Finish, Painted, White	

2.2 Lighting

	Element	Element Description	Observations (Check-In)
2.2.1	Spotlight Track	Metal, 5 x Bulbs	



2.2 Lighting

2.3 Door

	Element	Element Description	Observations (Check-In)
2.3.1	Door	Veneer, Lever Handle(s)	
2.3.2	Door Frame	Wood, Painted	



2.3 Door

2.4 Floor

	Element	Element Description	Observations (Check-In)
2.4.1	Carpet	Close Woven Pile, Fitted, Cream	Floor has a light mark.



2.4.1 Floor has a light mark.

2.5 Wall

	Element	Element Description	Observations (Check-In)
2.5.1	Skirting	Painted, White	Skirting has a mark.
2.5.2	Wall	Plaster, Painted, Cream	Walls have a few marks and cracking.



2.5.1 Skirting has a mark.



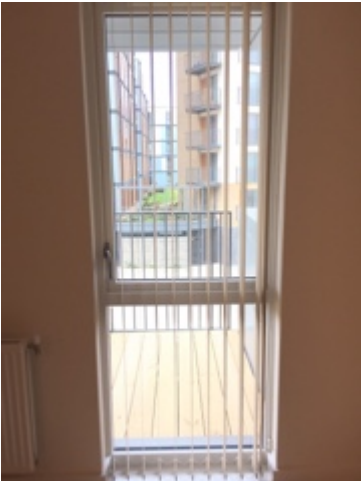
2.5.2 Walls have a few marks and cracking.



2.5.2 Walls have a few marks and cracking.

2.6 Window/Balcony Door

	Element	Element Description	Observations (Check-In)
2.6.1	UPVC	Double Glazed - Fully, White, With Lever Handle(s), With Lock(s) & Key(s)	Window frame and sill have a few marks.



2.6 Window/Balcony Door



2.6 Window/Balcony Door



2.6.1 Window frame and sill have a few marks.



2.6.1 Window frame and sill have a few marks.



2.6.1 Window frame and sill have a few marks.

2.7 Blinds

	Element	Element Description	Observations (Check-In)
2.7.1	Vertical	2 x, Cotton, With Pull Cords	

2.8 Radiator

	Element	Element Description	Observations (Check-In)
2.8.1	Double Panel	2 x, Enamel, Wall Mounted	



2.8 Radiator



2.8 Radiator

2.9 Room Thermostat Control

	Element	Element Description	Observations (Check-In)
2.9.1	Room Thermostat Control	Digital, Danfloss, Wall Mounted	



2.9 Room Thermostat Control

3: Kitchen

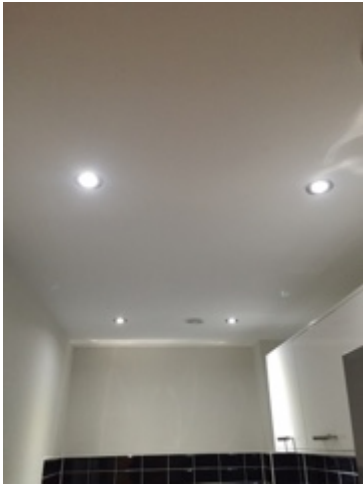


3.1 Ceiling

	Element	Element Description	Observations (Check-In)
3.1.1	Ceiling	Plaster Finish, Painted, White	

3.2 Lighting

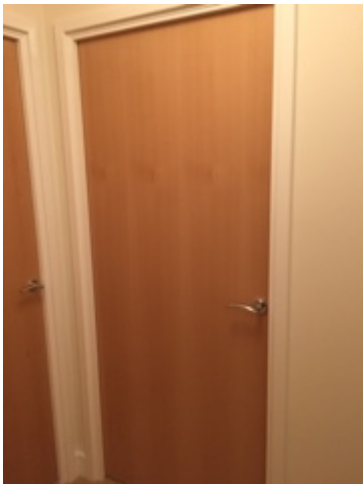
	Element	Element Description	Observations (Check-In)
3.2.1	Lighting	LED, Under Units	
3.2.2	Recessed Spotlights	With Chrome Effect Fitting	



3.2 Lighting

3.3 Door

	Element	Element Description	Observations (Check-In)
3.3.1	Door	Veneer, Lever Handle(s)	Door has a few marks, and creeks/squeaks when opening/closing.
3.3.2	Door Frame	Wood, Painted	



3.3 Door



3.3.1 Door has a few marks, and creeks/squeaks when opening/closing.



3.3.1 Door has a few marks, and creeks/squeaks when opening/closing.



3.3.1 Door has a few marks, and creeks/squeaks when opening/closing.

3.4 Floor

	Element	Element Description	Observations (Check-In)
3.4.1	Tiled	Ceramic, Black	Floor has a few marks.



3.4.1 Floor has a few marks.

3.4.1 Floor has a few marks.

3.5 Wall

	Element	Element Description	Observations (Check-In)
3.5.1	Skirting	Painted, White	
3.5.2	Tiling	Part Tiled, Black	
3.5.3	Wall	Plaster, Painted, Cream	Walls have small marks .



3.5.3 Walls have small marks .



3.5.3 Walls have small marks .

3.6 Radiator

	Element	Element Description	Observations (Check-In)
3.6.1	Double Panel	Enamel, Wall Mounted	



3.6 Radiator

3.7 Kitchen Units

	Element	Element Description	Observations (Check-In)
3.7.1	All Units	High Gloss Finish, White, Base Units, Wall Units, Drawers, Pull Handles, Recycle Bin	



3.7 Kitchen Units

3.8 Worktop(s)

	Element	Element Description	Observations (Check-In)
3.8.1	Worktop(s)	Granite Effect, Laminate, With Splashback, Black	Worktop has a mark.



3.8.1 Worktop has a mark.

3.9 Sink

	Element	Element Description	Observations (Check-In)
3.9.1	Sink	1.5 Bowl, Stainless Steel, Chrome Effect, Mixer Tap, Waste Plug	



3.9 Sink

3.10 Washer Dryer

	Element	Element Description	Observations (Check-In)
3.10.1	Washer Dryer	Zanussi, Front Loading, Integrated	



3.10 Washer Dryer

3.11 Oven

	Element	Element Description	Observations (Check-In)
3.11.1	Oven	Zanussi, Built In, Electric, Grille Pan With Mesh, Shelves	



3.11 Oven

3.12 Hob

	Element	Element Description	Observations (Check-In)
3.12.1	Hob	Zanussi, 4 Ring, Electric	



3.12 Hob

3.13 Extractor Hood

	Element	Element Description	Observations (Check-In)
3.13.1	Extractor Hood	Integrated Spots, Single Mesh, Zanussi	



3.13 Extractor Hood

3.14 Fridge Freezer

	Element	Element Description	Observations (Check-In)
3.14.1	Fridge Freezer	Free Standing, Egg Tray, Salad Box, Shelves, Hisense, Double Doors	



3.14 Fridge Freezer

4: Cupboard



4.1 Ceiling

	Element	Element Description	Observations (Check-In)
4.1.1	Ceiling	Plaster Finish, Painted, White	

4.2 Door

	Element	Element Description	Observations (Check-In)
4.2.1	Door	Veneer, Lever Handle(s)	Door has a few marks.
4.2.2	Door Frame	Wood, Painted	Door frame has a small mark.



4.2 Door

4.2.1 Door has a few marks.

4.2.1 Door has a few marks.



4.2.2 Door frame has a small mark.

4.3 Floor

	Element	Element Description	Observations (Check-In)
4.3.1	Carpet	Close Woven Pile, Fitted, Cream	

4.4 Wall

	Element	Element Description	Observations (Check-In)
4.4.1	Skirting	Painted, White	Skirting has a few marks.
4.4.2	Wall	Plaster, Painted, Cream	



4.4.1 Skirting has a few marks.

4.5 Fuse Box

	Element	Element Description	Observations (Check-In)
4.5.1	Fuse Box	Consumer Unit, With Cover	



4.5 Fuse Box

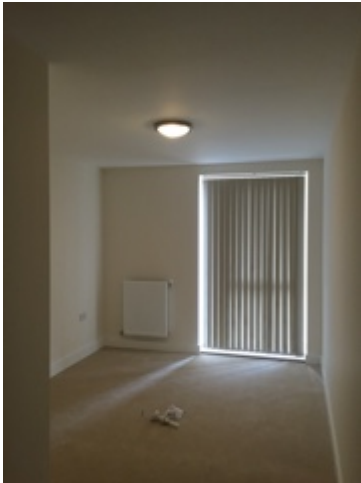
4.6 Boiler

	Element	Element Description	Observations (Check-In)
4.6.1	Boiler	White, With Digital Meter	



4.6 Boiler

5: Bedroom 1



5.1 Ceiling

	Element	Element Description	Observations (Check-In)
5.1.1	Ceiling	Plaster Finish, Painted, White	

5.2 Lighting

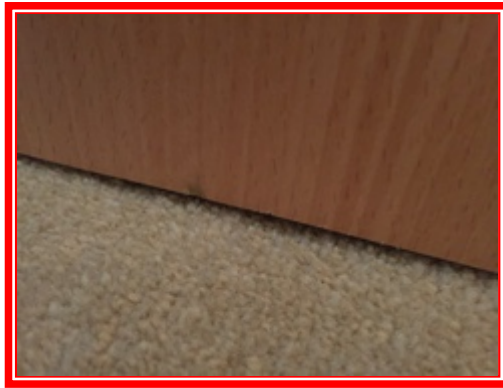
	Element	Element Description	Observations (Check-In)
5.2.1	Surface Mounted	Chrome Effect , With Glass Shade	



5.2 Lighting

5.3 Door

	Element	Element Description	Observations (Check-In)
5.3.1	Door	Veneer, Lever Handle(s)	Door has a few marks/chips to bottom.
5.3.2	Door Frame	Wood, Painted	



5.3.1 Door has a few marks/chips to bottom.

5.3 Door

5.4 Floor

	Element	Element Description	Observations (Check-In)
5.4.1	Carpet	Close Woven Pile, Fitted, Cream	

5.5 Wall

	Element	Element Description	Observations (Check-In)
5.5.1	Skirting	Painted, White	Skirting has hairline cracking.
5.5.2	Wall	Plaster, Painted, Cream	



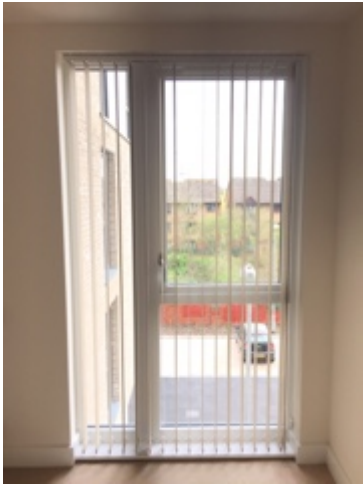
5.5.1 Skirting has hairline cracking.



5.5.1 Skirting has hairline cracking.

5.6 Window

	Element	Element Description	Observations (Check-In)
5.6.1	UPVC Window(s)	Double Glazed - Fully, White, With Lever Handle(s), With Lock(s) & Key(s)	



5.6 Window

5.7 Blinds

	Element	Element Description	Observations (Check-In)
5.7.1	Vertical	Blackout, With Pull Cords	

5.8 Radiator

	Element	Element Description	Observations (Check-In)
5.8.1	Single Panel	Enamel, Wall Mounted	



5.8 Radiator

5.9 Room Thermostat Control

	Element	Element Description	Observations (Check-In)
5.9.1	Room Thermostat Control	Digital, Danfloss, Wall Mounted	



5.9 Room Thermostat Control

6: En Suite



6.1 Ceiling

	Element	Element Description	Observations (Check-In)
6.1.1	Ceiling	Plaster Finish, Painted, White	

6.2 Lighting

	Element	Element Description	Observations (Check-In)
6.2.1	Recessed Spotlights	With Chrome Effect Fitting	

6.3 Door

	Element	Element Description	Observations (Check-In)
6.3.1	Door	Veneer, Lever Handle(s), Thumb Turn Lock	Door has a few marks.
6.3.2	Door Frame	Wood, Painted	Door frame has a few marks.



6.3 Door



6.3.1 Door has a few marks.



6.3.1 Door has a few marks.



6.3.1 Door has a few marks.



6.3.2 Door frame has a few marks.



6.3.2 Door frame has a few marks.

6.4 Floor

	Element	Element Description	Observations (Check-In)
6.4.1	Tiled	Ceramic, Black	Floor has a few marks.



6.4.1 Floor has a few marks.



6.4.1 Floor has a few marks.

6.5 Wall

	Element	Element Description	Observations (Check-In)
6.5.1	Skirting	Painted, White	
6.5.2	Tiling	Ceramic, Cream, Part Tiled	Grouting has a mark.
6.5.3	Wall	Plaster, Painted, Cream	Wall has a small chip.



6.5.2 Grouting has a mark.



6.5.3 Wall has a small chip.

6.6 Radiator

	Element	Element Description	Observations (Check-In)
6.6.1	Towel Rail	Chrome Effect , Wall Mounted	



6.6 Radiator

6.7 Toilet

	Element	Element Description	Observations (Check-In)
6.7.1	Toilet	Floor Mounted, Chrome Button Twin Flush, Seat And Lid To Match	



6.7 Toilet

6.8 Basin

	Element	Element Description	Observations (Check-In)
6.8.1	Basin	Wall Mounted With Pedastal, Chrome Effect, Mixer Tap, Pop Up Waste	Basin has a few marks/stains.



6.8 Basin



6.8.1 Basin has a few marks/stains.

6.8.1 Basin has a few marks/stains.

6.9 Shower

	Element	Element Description	Observations (Check-In)
6.9.1	Shower	Chrome Effect, Flexible Hose, Showerhead, Soap Dish, Glazed Sliding Enclosure	



6.9 Shower

6.10 Accessories

	Element	Element Description	Observations (Check-In)
6.10.1	Mirror	Rectangular , Wall Mounted, With Shelving	Shelving has a stain.

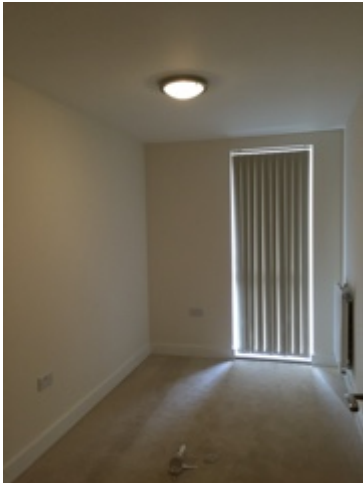


6.10 Accessories



6.10.1 Shelving has a stain.

7: Bedroom 2

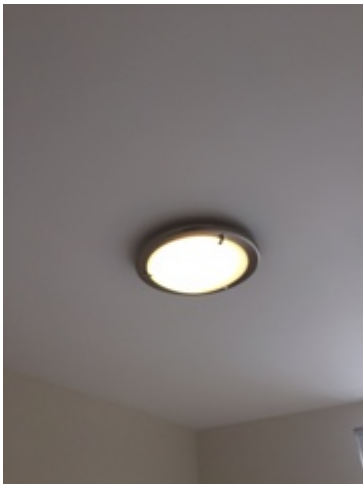


7.1 Ceiling

	Element	Element Description	Observations (Check-In)
7.1.1	Ceiling	Plaster Finish, Painted, White	

7.2 Lighting

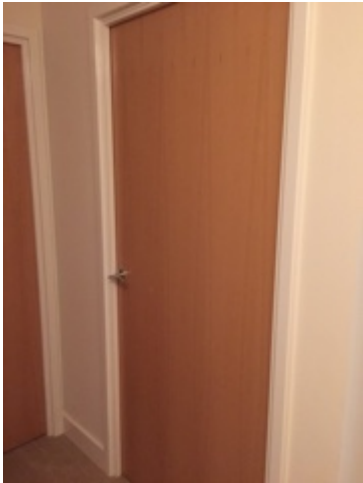
	Element	Element Description	Observations (Check-In)
7.2.1	Surface Mounted	Chrome Effect , With Glass Shade	



7.2 Lighting

7.3 Door

	Element	Element Description	Observations (Check-In)
7.3.1	Door	Veneer, Lever Handle(s)	Door has a few scratch marks.
7.3.2	Door Frame	Wood, Painted	Door frame has a few marks.



7.3 Door



7.3.1 Door has a few scratch marks.



7.3.2 Door frame has a few marks.



7.3.2 Door frame has a few marks.

7.4 Floor

	Element	Element Description	Observations (Check-In)
7.4.1	Carpet	Close Woven Pile, Fitted, Cream	

7.5 Wall

	Element	Element Description	Observations (Check-In)
7.5.1	Skirting	Painted, White	Skirting has a few marks and cracking.
7.5.2	Wall	Plaster, Painted, Cream	



7.5.1 Skirting has a few marks and cracking.

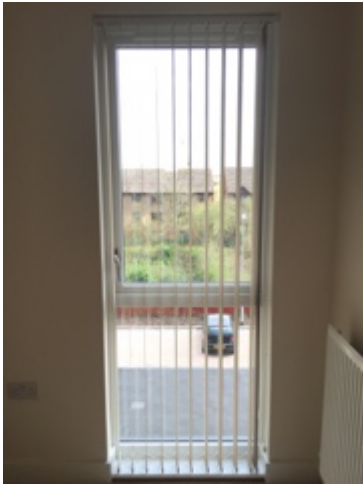


7.5.1 Skirting has a few marks and cracking.



7.5.1 Skirting has a few marks and cracking.

7.6 Window			
	Element	Element Description	Observations (Check-In)
7.6.1	UPVC Window(s)	Double Glazed - Fully, White, With Lever Handle(s), With Lock(s) & Key(s)	



7.6 Window

7.7 Blinds

	Element	Element Description	Observations (Check-In)
7.7.1	Vertical	Blackout, With Pull Cords	

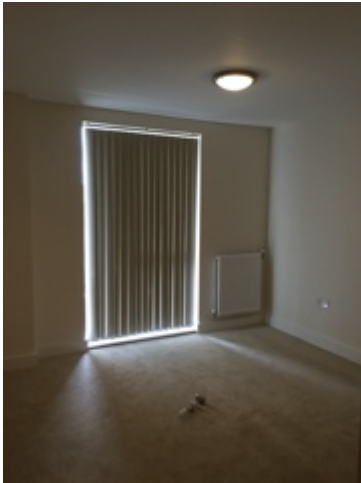
7.8 Radiator

	Element	Element Description	Observations (Check-In)
7.8.1	Single Panel	Enamel, Wall Mounted	



7.8 Radiator

8: Bedroom 3



8.1 Ceiling

	Element	Element Description	Observations (Check-In)
8.1.1	Ceiling	Plaster Finish, Painted, White	

8.2 Lighting

	Element	Element Description	Observations (Check-In)
8.2.1	Surface Mounted	Chrome Effect , With Glass Shade	



8.2 Lighting

8.3 Door

	Element	Element Description	Observations (Check-In)
8.3.1	Door	Veneer, Lever Handle(s)	Door has a mark.
8.3.2	Door Frame	Wood, Painted	Door frame has a few marks.



8.3 Door



8.3.1 Door has a mark.



8.3.2 Door frame has a few marks.

8.4 Floor

	Element	Element Description	Observations (Check-In)
8.4.1	Carpet	Close Woven Pile, Fitted, Cream	

8.5 Wall

	Element	Element Description	Observations (Check-In)
8.5.1	Skirting	Painted, White	Skirting has a few marks.
8.5.2	Wall	Plaster, Painted, Cream	Walls have a few marks.



8.5.1 Skirting has a few marks.



8.5.1 Skirting has a few marks.



8.5.1 Skirting has a few marks.



8.5.1 Skirting has a few marks.



8.5.1 Skirting has a few marks.



8.5.1 Skirting has a few marks.



8.5.2 Walls have a few marks.



8.5.2 Walls have a few marks.



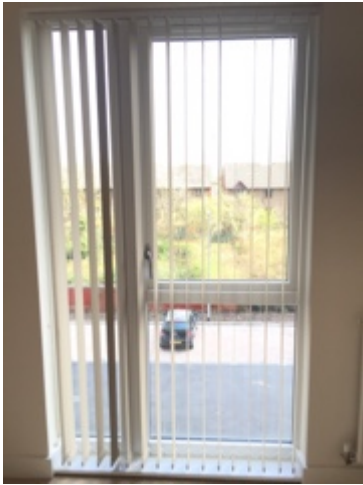
8.5.2 Walls have a few marks.



8.5.2 Walls have a few marks.

8.6 Window

	Element	Element Description	Observations (Check-In)
8.6.1	UPVC Window(s)	Double Glazed - Fully, White, With Lever Handle(s), With Lock(s) & Key(s)	



8.6 Window

8.7 Blinds

	Element	Element Description	Observations (Check-In)
8.7.1	Vertical	Blackout, With Pull Cords	

8.8 Radiator

	Element	Element Description	Observations (Check-In)
8.8.1	Single Panel	Enamel, Wall Mounted	



8.8 Radiator

9: Bathroom



9.1 Ceiling

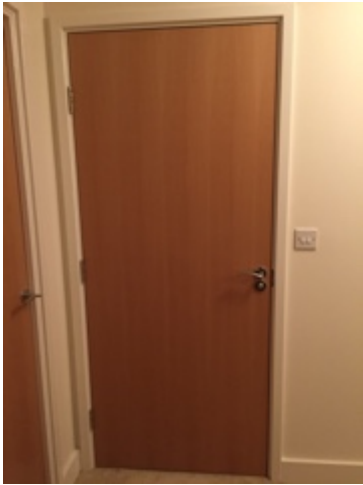
	Element	Element Description	Observations (Check-In)
9.1.1	Ceiling	Plaster Finish, Painted, White	

9.2 Lighting

	Element	Element Description	Observations (Check-In)
9.2.1	Recessed Spotlights	With Chrome Effect Fitting	

9.3 Door

	Element	Element Description	Observations (Check-In)
9.3.1	Door	Veneer, Lever Handle(s), Thumb Turn Lock	Door has marks/stains.
9.3.2	Door Frame	Wood, Painted	Door frame has a stain.
9.3.3	Second Door	Veneer, With Chrome Effect Lever Handle(s)	Door and frame have marks.



9.3 Door



9.3 Door



9.3.1 Door has marks/stains.



9.3.1 Door has marks/stains.



9.3.2 Door frame has a stain.



9.3.3 Door and frame have marks.



9.3.3 Door and frame have marks.

9.4 Floor

	Element	Element Description	Observations (Check-In)
9.4.1	Tiled	Ceramic, Black	Floor has a few stains.



9.4.1 Floor has a few stains.



9.4.1 Floor has a few stains.



9.4.1 Floor has a few stains.

9.5 Wall

	Element	Element Description	Observations (Check-In)
9.5.1	Skirting	Painted, White	
9.5.2	Tiling	Ceramic, Part Tiled, White	
9.5.3	Wall	Plaster, Painted, Cream	Wall has cracking.



9.5.3 Wall has cracking.

9.6 Radiator

	Element	Element Description	Observations (Check-In)
9.6.1	Towel Rail	Chrome Effect , Wall Mounted	



9.6 Radiator

9.7 Toilet

	Element	Element Description	Observations (Check-In)
9.7.1	Toilet	Floor Mounted, Chrome Button Twin Flush, Seat And Lid To Match	Toilet has a stain.



9.7 Toilet



9.7.1 Toilet has a stain.

9.8 Basin

	Element	Element Description	Observations (Check-In)
9.8.1	Basin	Wall Mounted With Pedastal, Chrome Effect, Mixer Tap, Pop Up Waste	Mixer tap and pop up waste has limescale stains.



9.8 Basin



9.8.1 Mixer tap and pop up waste has limescale stains.



9.8.1 Mixer tap and pop up waste has limescale stains.

9.9 Bath

	Element	Element Description	Observations (Check-In)
9.9.1	Bath	White, Grab Handles, Chrome Effect Mixer Tap, Flexible Hose with Shower Head, Pop Up Waste	Bath has a few stains.



9.9 Bath



9.9.1 Bath has a few stains.



9.9.1 Bath has a few stains.



9.9.1 Bath has a few stains.

9.10 Accessories

	Element	Element Description	Observations (Check-In)
9.10.1	Mirror	Rectangular , Wall Mounted, With Shelving	



9.10 Accessories

10: Balcony



Declarations

Tenant Declaration

Whilst every care has been taken to ensure the accuracy of this report, the Landlord and the Tenant(s) are reminded that it is their responsibility to check the accuracy of its contents.

I/ we acknowledge receipt of this report and will advise any proposed amendments in accordance with the instructions highlighted in the "About The Report" section.

Lead Tenant Name:

Lead Tenant Email:

Lead Tenant Signature:

Assessor Declarations

I confirm that this report reflects my assessment of the property.

Assessor Name: **** **

Assessor Email: info@symba-residential.co.uk

Assessor Signature:

